

# TRAKBLAZE

MINING, RAIL, ROAD & AIRCRAFT WEIGHING SYSTEMS

*Over 95 Years of Innovation*



**MINING**



**RAIL**



**ROAD**



**AVIATION**

## MINING PRODUCT CATALOGUE 2025

*The TRAKBLAZE Difference is in the Detail*

[www.trakblaze.com](http://www.trakblaze.com) | [info@trakblaze.com](mailto:info@trakblaze.com)

Follow us on     

Note: Technical specifications subject to change without notice. Images are for illustration purposes only.

## Trakblaze Pty Ltd

Boasting over 95 years of expertise, Trakblaze Pty Ltd specialises in the production of cutting-edge static and weigh in-motion (WIM) hi-tech systems for weighing, balancing, monitoring, and volumetric scanning. Our solutions cater to the railway, road, mining, and aviation sectors.

## Mission Statement

To innovate and deliver superior weighing solutions that meet the highest standards of accuracy and reliability, serving diverse industries with dedication and expertise globally.



*If you've been making them for over 95 years  
- you too would know...*

# CONTENT

## MINING PRODUCTS

Pages

**INFINITY** - Low/Hi-speed weigh in-motion (WIM) train weighing system 4

**TRUCKMATE** - Static or in-motion portable truck axle weigher 6

**TRUCKMATE LITE** - Ultra low profile portable truck axle weigher 8

**FORCE 10** - Portable modular weighbridge 9

**FORCE 1** - Weigh in-motion (WIM) truck axle scale 10

**FORCE 2 & 4** - Semi portable static & dynamic axle weigher 12

**FORCE 03** - Heavy duty portable mining truck scale 14

**FORCE 05** - Static & dynamic portable mining truck scale 16

**FORCE 06** - Portable mining truck scale 19

**TVS** - Mining / haul truck volumetric scanner 20

**RVS/MVS** - Rail/Mobile volumetric scanner 22

# INFINITY

## Low/Hi-Speed Weigh In-Motion (WIM) Train Weighing System Accurate Reliable Load Cell Based System



### INFINITY LS - Low Speed weighing up to 15km/h:

The Weigh In-Motion INFINITY-LS weighbridge electronic weigh-sleeper based system is the ideal low speed solution for mine loadouts, industrial plants, cement plants, power stations, steel mills etc. It consists of 2 electronic weigh sleepers & 4 dummy sleepers braced together forming one solid structure, incl. control cabinet and a PC with Trakblaze train weighing software.

The INFINITY-LS train weighing system can be installed two wagon lengths or more out from the loadout and provides the operator axle, bogie, wagon weight data, speed & wagon number all in real-time. This unique train weighing system enables the loading operator to regulate the filling so that the wagons are not under or overloaded. Weight data storage, printout & other features are available and train weighing results can be accessed from any location via the internet.

Installation of the INFINITY-LS train weighing system takes approximately 1 to 2 days (site dependent). Concrete foundation or civil works are not always required, however this is greatly dependent upon site conditions, although some form of ballast stabilisation is recommended to eliminate impact effects at the weighing transition points to ensure weighing accuracy and scale reliability.

### INFINITY HS - Hi-Speed weighing up to 80km/h:

The Hi-Speed Weigh In-Motion INFINITY-HS is capable of train weighing up to 80km/h, dependent on track/site conditions & test train/rolling stock and operator. The INFINITY WIM rail weighing system consists of 6 electronic weigh sleepers & up to 12 dummy sleepers braced together forming one solid structure, including accessories, control cabinet and a PC with train weighing software. Train weighing results can be accessed from any location via the internet. Installation of the INFINITY-HS train weighing system takes approximately 2 to 3 days. Concrete foundation or civil works are not always required.

#### Benefits:

- Accurate reliable proven load cell based system
- No rail cutting, welding or grinding required
- Minimal installation / repair track down time
- Approx. 30 minutes to change parts (if required)
- Temperature compensated

**LS** = 0.1 UP TO 15KM/H  
**LOW SPEED** = (0.1 TO UP 9MPH)

**HS** = 0.1 UP TO 80KM/H  
**HI-SPEED** = (0.1 UP TO 50MPH)



## TECHNICAL DATA

Capacity	Up to 50t per Axle
Achievable Accuracy	± 0.5% - 2% wagon approx. ± 0.25% - 0.5% total train approx.
Operating Temperature	-10°C - +70°C (in-track equipment only)
Transit Speed	Unlimited (approval by rail authority)
Voltage	24V DC / 110V - 250V AC
Data Transfer	TCP / IP

Note: Subject to change without notice. Images are for illustration purposes only. Speeds and accuracies may vary based on site conditions and vehicle operator.

### INFINITY OVERVIEW:

- Low & Hi-Speed weighing
- Reliable loadcell based system
- Can be installed in a curved track \*(up to 5km/h)
- No rail cutting, welding or grinding required
- Approx. 30 minutes to change parts
- Temperature compensated



Installation of INFINITY 'LS' weighing system in curved track



Australian Government  
Department of Industry,  
Science and Resources

National  
Measurement  
Institute

Registered Designs & Global Patents Apply

TRAKBLAZE INFINITY is Certified to NMI R106 (Automatic Rail Weighbridges)  
Approval No: NMI 6/14H/8

# TRUCKMATE

## The Next Generation Portable Axle Weigher

Reduce the Risk of Overloading

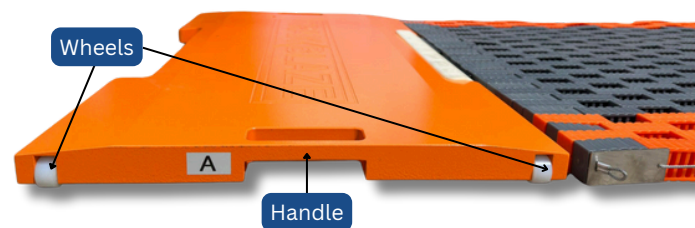


Introducing our hi-technology portable truck axle weigher **TRUCKMATE** the ultimate high accuracy weighing solution for trucks, trailers and other heavy-duty vehicles. Wired or wireless, accurate weight measurements have never been easier.

Designed with durability in mind, TRUCKMATE features two or more high-quality weighing pads capable of handling up to 40 tonne per axle. Constructed from heavy-duty steel, these pads provide a non-slip surface for precise weight readings in any operating environment.

One of the key features of the TRUCKMATE Axle Vehicle Weighing Scale is its wireless connectivity, which allows for easy data transfer and real-time weight monitoring.

The system includes a compact and lightweight controller with a clear LCD display and printer in a robust carry case providing users with accurate weight readings.



### Key features:

- Slimline
- Load cell based with high static or weigh in-motion high accuracy
- Water-Resistant, corrosion-proof & shock-resistant
- Large weighing surfaces that can accommodate dual tyres
- Built-in cable protector to avoid error when cable is broken (wired version)
- Built-in anti-electromagnetic parts to ensure weighing results will not be influenced
- Built-in auto compensation system to compensate for weighing error on dual and tri-axle groups

Rolled up levelling mats

Note: Levelling mats may be required for varying vehicle configuration

# TECHNICAL DATA

## PAD INFORMATION FOR STATIC WEIGHING

Pad size (mm)	Ramp size	Approx. Capacity per pad
400 x 300 x 40	400 x 250	5 tonne
500 x 400 x 40	500 x 250	10 tonne
800 x 450 x 40	800 x 350	15 tonne
900 x 500 x 40	900 x 350	20 tonne

## PAD INFORMATION FOR DYNAMIC WEIGHING

Pad size (mm)	Roll up mat size	Capacity per pad
400 x 300 x 40	3000 x 400	5 tonne
500 x 400 x 40	3000 x 500	10 tonne
800 x 450 x 40	3000 x 800	15 tonne
900 x 500 x 40	3000 x 900	20 tonne

<b>Static Accuracy:</b>	± 0.3%
<b>In-Motion Accuracy:</b>	± 2.0%
<b>Temperature Compensation Range:</b>	-10 ~ +50°C
<b>Sensitivity:</b>	1±0.2 MV/V
<b>Repeatability:</b>	≤0.01%FS
<b>Working Temperature:</b>	-40 ~ +80°C
<b>Overload Protection:</b>	Approx. 120%

Note: Subject to change without notice. Images are for illustration purposes only. Speeds and accuracies may vary based on site conditions and vehicle operator.



Rubber Pad Alignment & Securing Frame



Storage case

Trakblaze TruckMate TB101 DataStore

Application Tools Report About

End of the Day Mode | **Real Time Mode** | Reset

Axle:01 09:11:28 5000kg  
 Axle:02 09:11:46 10010kg  
 Axle:03 09:11:55 10200kg  
 Axle:04 09:12:08 15010kg  
 Total Weight: 40220kg  
 Vehicle Rego: UDQ744  
 24/01/2012 09:12:18

Truck No	Date Time	Gross	Axes
UDQ744	24/01/2012 09:12:18	40220	4

Save Data

v1.1.0 - TB101 port COM5 opened - Device detected

TRUCKMATE software data display, storage & spreadsheets

```

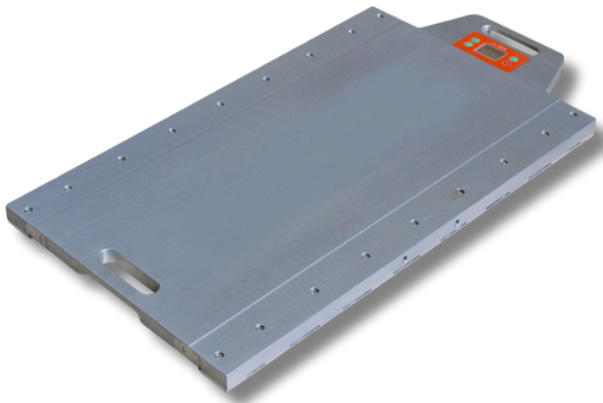
WEIGHING REPORT
-----
Serial No.:00012
Date:10-10-2023
Time:11:42:26
Truck:123
Operator:
Driver:
-----
Total weight: 240kg
-----
No.1 Axle Config: 1
Group Weight: 240kg
-----
No.1 Axle
Group Weight: 240kg
-----

WEIGHING REPORT
-----
Serial No.:00013
Date:10-10-2023
Time:11:43:45
Truck:123
Operator:
Driver:
-----
Total weight: 280kg
-----
No.1 Axle Config: 5
Group Weight: 280kg
-----
No.1 Axle
Group Weight: 140kg
-----
No.2 Axle
Group Weight: 140kg
    
```

Printout sample

# TRUCKMATE LITE

**Portable, Light Weight, Accurate, Robust & Reliable**  
Ultra-Low Profile Design With Built-in Digital Display



The **TRUCKMATE LITE** is a portable, high-precision axle and wheel scale designed for static vehicle weight measurement. Built with lightweight, low-profile aluminium pads, it features integrated ramps and handles for easy setup and transport. TRUCKMATE LITE modular design supports 2 or more pads to suit various vehicle configurations. With a built-in digital display, optional wireless communication, and IP-rated, rugged construction, it delivers reliable performance in demanding environments. Ideal for fleet management, logistics, compliance checks, and roadside enforcement, the TRUCKMATE LITE ensures accurate, repeatable weight readings every time.

## Key Features

- Durable Aluminium Construction.
- Ultra-Low Profile & Integrated Design, easy to deploy and position under vehicles.
- Water-Resistant, Corrosion-Proof & Shock-Resistant.
- Multi-Seal Protection
- Lightweight and Portable with Built-In Handles for convenient transport and setup.
- User-Friendly Operation, simple interface with live weight readings.
- High Accuracy & Repeatability.
- Built-In Ramps allows smooth access for vehicle wheels.
- Integrated Digital Weight Display.
- Backlit Display.
- Battery Powered runs on high-capacity AAA alkaline batteries for up to 100 hours of operation.

## Static Weighing

Each wheel of the vehicle is weighed individually using dedicated weighing pads. The system can be configured with 2 or more pads, depending on the number of wheels or axles. This allows for accurate measurement of individual wheel loads, axle weights, and total vehicle weight during stationary (static) conditions.

## TECHNICAL DATA

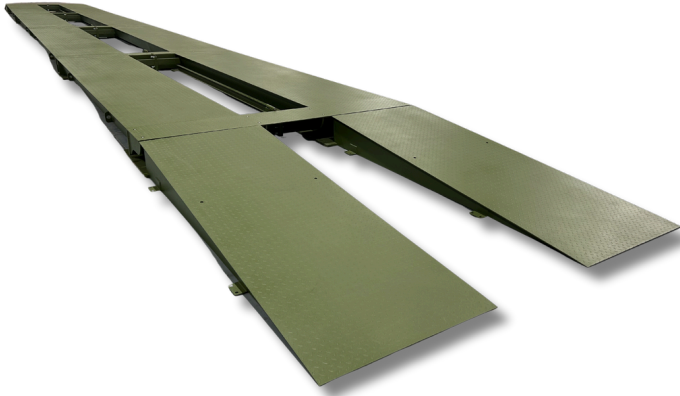
Weighing Surface	700 × 430 mm
Overall Pad Dimensions	800 × 430 × 30 mm
Max Load per Pad	10t
Static Accuracy	≤ ±1% of full scale
Repeatability	≤ ±0.01% FS
Temperature Effect	~0.1% per 10 °C
Operating Temp Range	-10 °C to +65 °C
Battery Runtime	Up to 100 hours on AAA alkaline batteries
Display Range	Built-in LCD indicator with backlight
Connectivity	Optional wired or wireless setup (up to 30m)

Note: Subject to change without notice. Images are for illustration purposes only. Accuracies may vary based on site conditions and vehicle operator.

# FORCE 10

## Portable Modular Weighbridge

Accurate, Robust & Reliable



The **FORCE 10** is a surface-mounted Modular/Portable weighbridge engineered to weigh road vehicles up to 80 tons. Its fold-open design includes all components from the deck to the load cells fully assembled for transport. Making setup and relocation fast and effortless. With a mere 30 cm module height, FORCE 10 is perfect where ramp space is limited.

### Key Features

- **Highly portable & transport-ready:** Hinged platform modules fold for easy transport.
- **Low-profile installation:** At only 30 cm high, the weighbridge requires minimal foundation and ramp length.
- **Heavy-duty steel construction:** Robust build ensures durability even in harsh site conditions.
- **Accurate load measurements:** High-resolution analog or digital compression load cells deliver precise and reliable readings.
- **Rapid deployment:** Surface-mounted design and integrated load cell system mean very quick setup.
- **Customisable sizing:** Options include module dimensions such as 3.0 x 18 m, 3.0 x 22 m, and 3.0 x 24 m, adaptable to site and application requirements.
- The FORCE 10 is easy to install, with training available from Trakblaze's highly skilled engineers via Zoom or on-site. It's essentially a do-it-yourself product

### Applications

- Construction & mining sites
- Logistics hubs and distribution centers
- Toll booths or remote weigh stations
- Temporary sites requiring accurate weight control

#### Optional LED Display



#### Optional Wired/Wireless Indicator



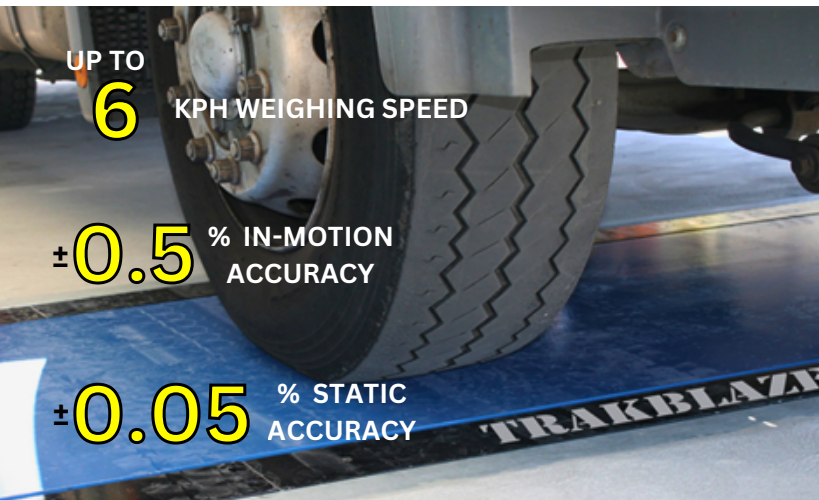
### TECHNICAL DATA

Dimensions (m)	Axle Load (t)	Capacity (t)	Surface Treatment
3.0 x 18	Up to 10t	Up to 80t	Standard Paint / Corrosion protection Paint
3.0 x 22			
3.0 x 24			

Note: Subject to change without notice. Images are for illustration purposes only. Accuracies may vary based on site conditions and vehicle operators.

# FORCE 1

The World's Toughest WIM Axle Weigher  
Weigh a Truck In-Motion in 15 Seconds or Less!



## Save Time & Money With FORCE 1

The **FORCE 1 Weigh In-Motion (WIM)** truck axle weighing system provides weights on the go and eliminates the need for traditional weighbridges that take up valuable yard space.

The unbeatable FORCE 1 available in both static and in-motion models is built to withstand the world's toughest transport conditions while delivering exceptional accuracy.

Maximise productivity and profitability by ensuring precise, consistent load measurements while mitigating maintenance risks from overloading. Even if a truck's total weight is within limits, its axles may still be overloaded, the FORCE 1 can detect this issue.

The FORCE 1 is easy to install, with training available from Trakblaze's highly skilled engineers via Zoom or on-site. It's essentially a do-it-yourself product



- Unmatched Speeds up to approx. 6 kph
- Unmatched Accuracies at approx.  $\pm 0.05\%$
- User-friendly Software
- Latest Electronic Technology
- Robust Compact Design
- Minimal Civil Works Required
- IP-67 Rating (Outdoor equipment)
- Relocatable

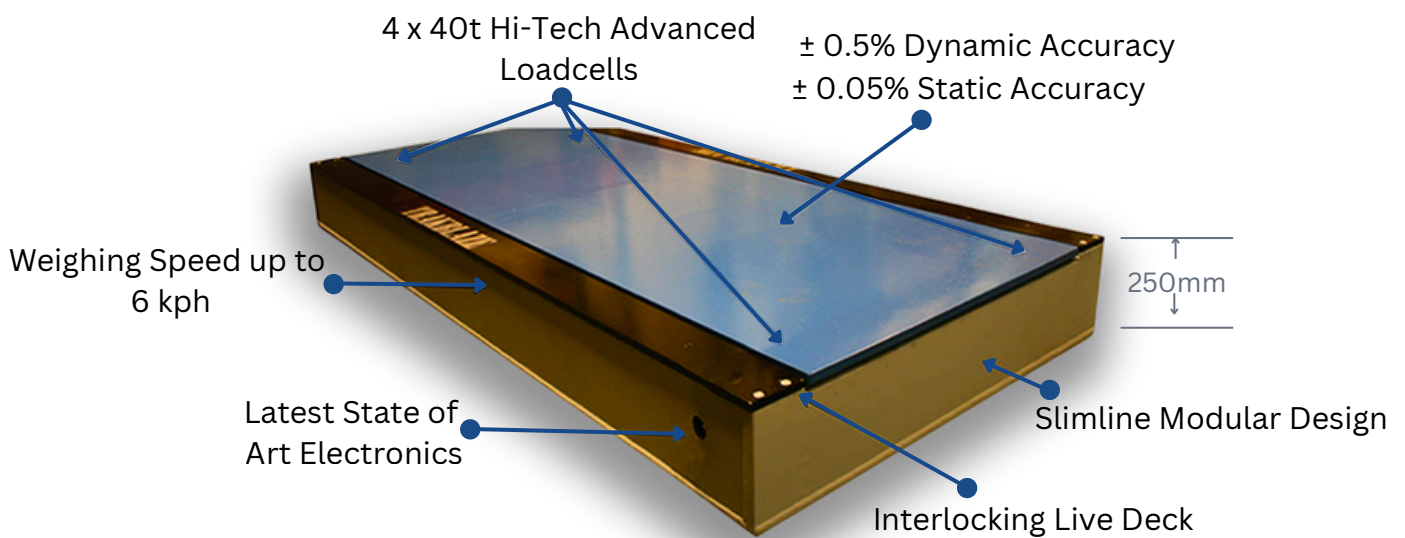
NOTE: These are the same electronics & software used in our high speed trade approved train weighing systems, hence the FORCE™ 1's unmatched speed & accuracy.

## FORCE 1 Site Installation in South Australia:

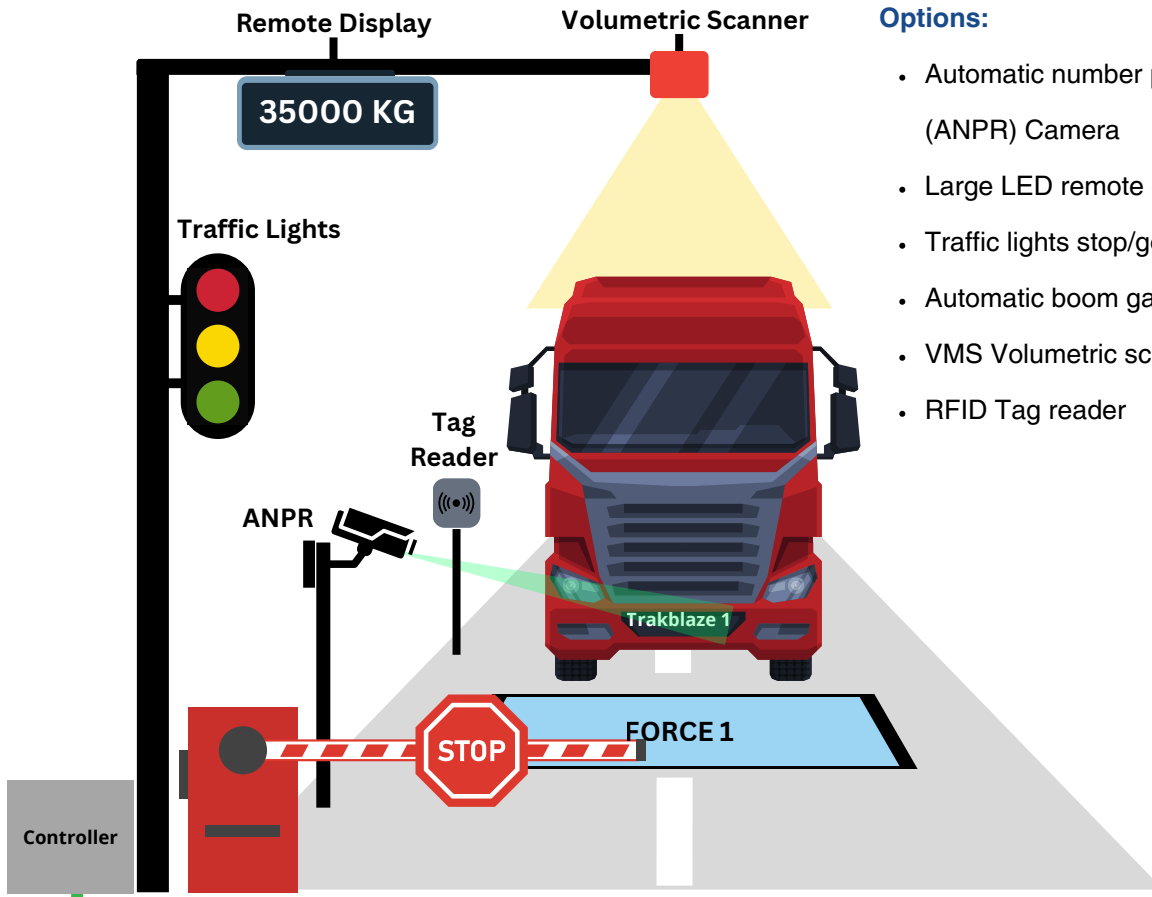
The FORCE 1 system, installed in South Australia, is used to weigh a 200-tonne centipede road train measuring 64.5 metres in length with 110 wheels in-motion at a speed of 6 km/h with  $\pm 0.5\%$  dynamic accuracy, showcasing FORCE 1's unmatched performance and reliability even in the harshest conditions.



## FORCE 1 HD Weighing Pad: 3060 mm(L) x 1160 mm(W) x 250 mm(H)



## System Overview & High-Level Design



### Options:

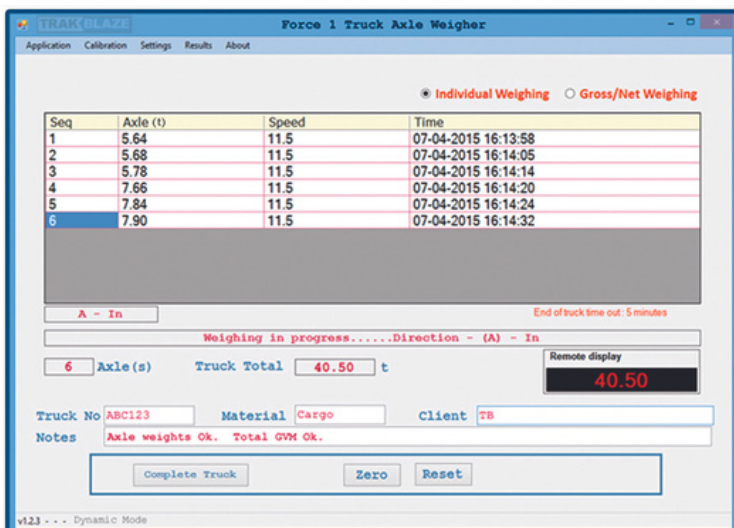
- Automatic number plate recognition (ANPR) Camera
- Large LED remote display
- Traffic lights stop/go
- Automatic boom gate
- VMS Volumetric scanner
- RFID Tag reader

### Network Connection

## Static/Dynamic Controller - PC Software

The **FORCE 1** Transport system features a Trakblaze Static/Dynamic Controller with direct ethernet capabilities interfaced to your workplace PC or laptop

The PC comes complete with Trakblaze's user-friendly proven and reliable software. The total truck weight is then derived from the summation of the individual axle loads and displayed on the PC interface and external remote LED display whilst also printed out for log books or archiving.



FORCE 1 - User Friendly & Reliable Software

For dusty or challenging environments the FORCE 1 controller can be upgraded to a rack/wall mounted Rittal enclosure turnkey.

Whatever your workplace or challenging environment is, the FORCE 1 system and Trakblaze have the bespoke solutions to ensure your loads are weighed with unbeatable speed, reliability and accuracy.

## Add On Options:



FORCE 1 with the traffic lights stop/go and our TVS truck volumetric scanner



FORCE 1 HD Weighing Platform



Automatic Number Plate Recognition (ANPR) Camera & Remote LED Display



FORCE 1 Weighing Platform



Automatic Number Plate Recognition (ANPR) Camera



Remote LED Display

## TECHNICAL DATA

Capacity:	Up to 50t Axle
Dimensions:	3060mm(W) x 1160mm(L) x 250mm(H) - Standard
Static Accuracy:	± 0.05% GVM (depending on site conditions)
Dynamic Accuracy:	± 0.5% GVM (depending on site conditions)
Voltage:	110 - 240 VAC/24 VDC
Speed:	6 km/h
Available Options:	<ul style="list-style-type: none"> <li>• Remote LED Display/s</li> <li>• Automatic Number Plate Recognition (ANPR) Camera</li> <li>• Traffic Lights Stop/Go</li> <li>• Automatic Boom Gate</li> <li>• VMS Volumetric Scanner</li> <li>• RFID Tag Reader</li> <li>• SMS Weigh Data Notifications for Drivers</li> </ul>

Note: Subject to change without notice. Images are for illustration purposes only. Speeds and accuracies may vary based on site conditions and vehicle operator.

# FORCE 2 & 4

## Semi Portable Static & Dynamic Axle Weigher

Proven To Be The World's Toughest Mining Truck Scale



FORCE 2

The **FORCE** range of portable and fixed mining dump truck scales represents the pinnacle of weighing technology for off-road heavy haulage applications. Designed for precision and durability, each system is built to optimise accuracy and withstand the toughest conditions.

Available in both fixed and portable configurations, FORCE consists of 2 or 4 individual weigh pads, allowing it to measure each wheel, axle group, and total dump truck weight with ease. Its modular design enables seamless configuration to accommodate any make and model of mining haul truck.

Additionally, the FORCE series offers an optional feature to monitor employee travel and productivity times, enhancing operational efficiency.

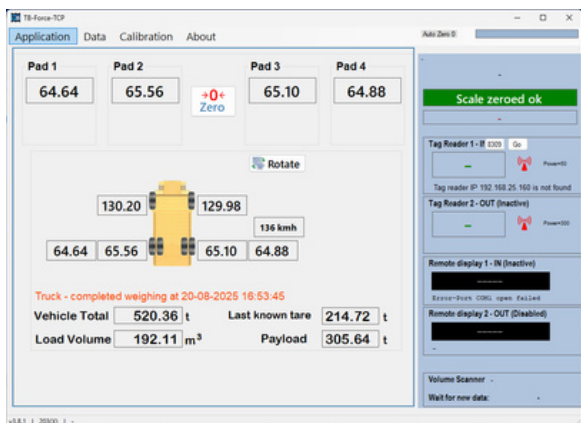
Each system includes:

- ✓ A touchscreen PC controller housed in a portable weatherproof case or
- ✓ A PC-based system loaded with Trakblaze's reliable, user-friendly software

The total truck weight is accurately calculated by summing individual wheel and axle loads, with results displayed in real time on the PC interface.

Experience unmatched precision, flexibility, and durability with FORCE – the trusted solution for mining haul truck weighing.

The FORCE 2 & 4 is easy to install, with training available from Trakblaze's highly skilled engineers via Zoom or on-site. It's essentially a do-it-yourself product



FORCE Software with Volumetric Scanning



PC based controller with built-in printer in carry case

Approx. dimensions 58cm x 45cm x 28cm



FORCE being tested and calibrated at site with a portable test press unit



Weatherproof outdoor electrical cabinet

## TECHNICAL DATA

### FORCE 4

Nominal Pad Size L x W x H	330cm x 200cm x 30cm
Weighing surface area	300cm x 200cm
No. of Pads	2 or 4
Load Cell Type	100t
No. of Cells per Pad	6
Individual Pad Capacity	150t
Total Axle Capacity	300t or 600t

## Load Sensors

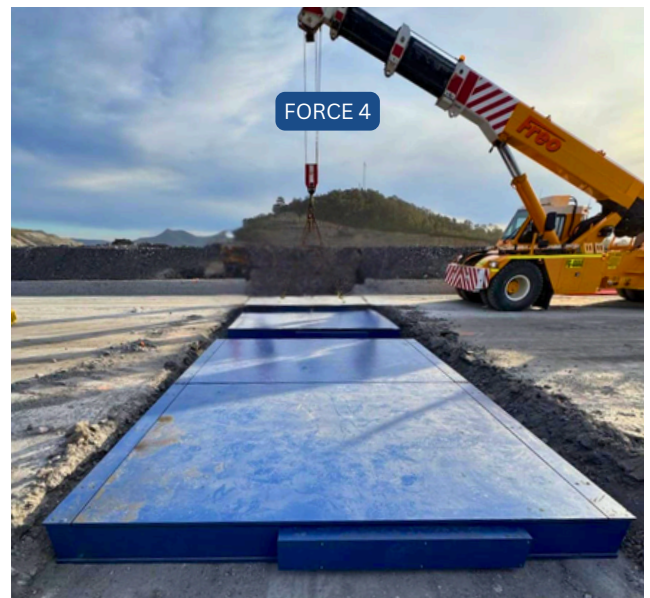
Each hi-technology weigh pad incorporates multiple heavy duty temperature compensated load cells. The strategic positioning of these sensors within the pad allows for off-center wheel loads to be measured accurately and with a safe overload sufficient to deal with the inertia and shock effects of a loaded mining truck braking on the weigh pad.

## Accuracies

Accuracies of approx.  $\pm 0.05$  in static mode and  $\pm 0.5\%$  in dynamic (in-motion) mode (Gross Vehicle Mass). This is achievable dependent upon the site conditions and the operator.

## Calibration

Each FORCE system is factory calibrated prior to shipment. We also offer an optional in-field portable calibration test press unit, which can be used at site by local service personnel.



Note: These are the same electronics & software used in our high speed 80 km/h govt. trade approved train weighing systems.

## TECHNICAL DATA

### FORCE 2

Nominal Pad Size L x W x H	230cm x 150cm x 25cm
Weighing surface area	200cm x 150cm
No. of Pads	2 or 4
Load Cell Type	40t
No. of Cells per Pad	4
Individual Pad Capacity	50t
Total Axle Capacity	100t or 200t

Note: Subject to change without notice. Images are for illustration purposes only. Speeds and accuracies may vary based on site conditions and vehicle operation.

# FORCE 03

## Heavy Duty Portable Mining Truck Axle Weigher Static & Dynamic Weighing



**FORCE 03** hi-technology heavy duty portable mining truck scales deliver precision and durability in the toughest conditions. Engineered for accuracy, these scales provide instant & reliable weight readings to optimise load management and prevent overloading.

Easy setup and transport, making them ideal for remote mining sites. With minimal maintenance and advanced technology, FORCE 03 scales improve efficiency and compliance, ensuring maximum productivity.

Whether for temporary or permanent use, they offer a cost-effective solution for heavy-duty mining operations.



### FEATURES:

- Static & Dynamic Weighing
- User Friendly, Robust, Accurate & Reliable
- Easy & Quick Set Up
- Individual Wheel Group Weights, Axle Weights & Total Weight
- Pre Factory Calibrated
- Sealed Protection for Tough Working Environments
- The FORCE 03 is easy to install, with training available from Trakblaze's highly skilled engineers via Zoom or on-site. It's essentially a do-it-yourself product

### ROBUST TOUCH SCREEN WEIGHING CONTROLLER

- Wireless Connection
- Bluetooth Connection
- Built-in Printer
- Rechargeable Battery & Direct Power Operation
- Battery Charging Time: Approx. Up to 9 hrs from empty battery
- Total Working Hours: Approx. 10 hrs (20 hrs with Screensaver)



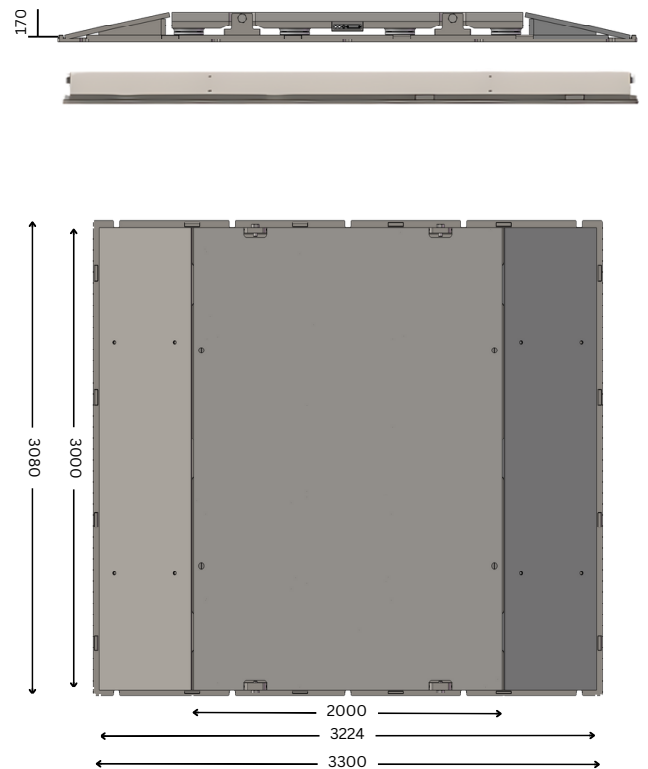
## TECHNICAL DATA

Model	FORCE 03-200t	FORCE 03-400t	FORCE 03-800t
Scale Quantity	2	2	4
Weighing Surface Dimensions	Approx. 2m(L) x 3m(W)		
Overall Size	3224mm(L) x 3000mm(W) x 150mm(H)		
Individual Scale/Pad Capacity	100t	200t	200t
Max Capacity	200t	400t	800t
Accuracy	Static accuracy (single pad): $\pm 0.05\%$ Static accuracy for truck weighing: $\pm 0.5\%$ (GVM) Dynamic accuracy for truck weighing: $\pm 1 - 2\%$ (GVM)		
Safe Load Protection	120%		
Connection	20m cable / 20m RF Wireless		
Shipping Weight	Up to approx. 7,000 kg per pad		

Note: Subject to change without notice. Images are for illustration purposes only. Speeds and accuracies may vary based on site conditions and vehicle operation.

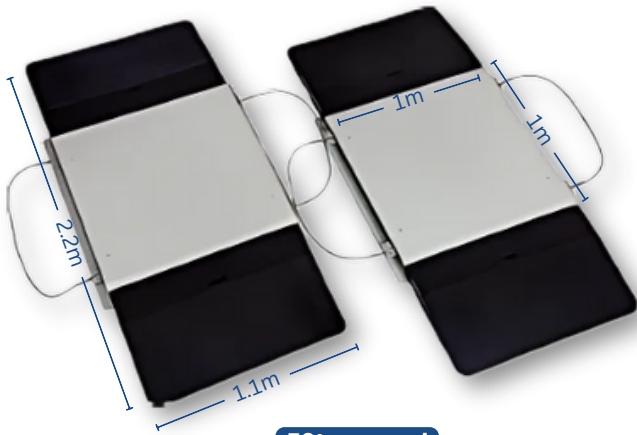


**FORCE 03-800t**



# FORCE 05

## Portable Mining Truck Axle Weigher Static & Dynamic Weighing



50t per pad



**FORCE 05** Portable Mining Truck Axle Weigher offers precise static and in-motion weighing for wheel, axle, and total vehicle weights. It features a high-definition touchscreen, USB/Bluetooth connectivity, and a built-in thermal printer. Powered by a rechargeable battery, FORCE 05 supports multiple languages (default: English). Built from heavy-duty mild steel with sealed protection, 05 is ideal for harsh environments. Pre-calibrated and easy to install, this system delivers reliable performance wherever accurate, portable weighing is needed.

### FEATURES:

- Static & Dynamic Weighing
- User Friendly, Robust, Accurate & Reliable
- Easy & Quick Set Up
- Individual Wheel Group Weights, Axle Weights & Total Weight
- Pre Factory Calibrated
- Sealed Protection for Tough Working Environments
- The FORCE 05 is easy to install, with training available from Trakblaze's highly skilled engineers via Zoom or on-site. It's essentially a do-it-yourself product

### ROBUST TOUCH SCREEN WEIGHING CONTROLLER

- Wired or Wireless Connection
- USB 2.0 & Bluetooth Connection
- Built-in Printer
- Rechargeable Battery & Direct Power Operation
- Battery Charging Time: Approx. Up to 9 hrs from empty battery
- Total Working Hours: Approx. 10 hrs (20 hrs with Screensaver)

### TECHNICAL DATA

Weighing Surface Dimensions	1m(L) x 1m(W)
Overall Size	2250mm(L) x 1120mm(W) x 84mm(H)
Individual Scale/Pad Capacity	50t
Static Accuracy (single pad): Static Accuracy for Truck Weighing: Dynamic Accuracy for Truck Weighing:	± 0.05% ± 0.5% (GVM) ± 1 - 2% (GVM)
Safe Load Protection	120%
Connection	20m cable / 20m RF Wireless

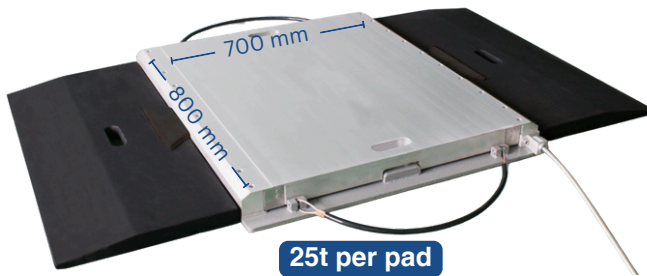
Note: Subject to change without notice. Images are for illustration purposes only. Speeds and accuracies may vary based on site conditions and vehicle operation.



# FORCE 06

## Portable Mining Truck Axle Weigher

Static & Dynamic Weighing, Robust & Reliable



**FORCE 06** Mining Truck Scale is engineered specifically for the rigors of the mining industry. Designed to deliver highly accurate weight measurements, 06 ensures reliable performance under extreme working conditions. Whether you're monitoring payloads or managing haul truck efficiency, the FORCE 06 is your go-to solution for precision and durability.

### Key Features

- **Static & Dynamic Weighing**
- **Engineered for Mining** - Purpose-built to withstand the harsh and rugged conditions of mining environments, ensuring consistent performance even in extreme settings.
- **Heavy-Duty Accuracy**
- **Portable & Fast to Deploy** - The modular, low-profile design allows for quick installation, easy relocation, and minimal site preparation—ideal for mobile or remote mining sites.
- **User-Friendly Operation**
- **Improves Load Management & Safety** - Accurate real-time weight data helps prevent overloading, improves fuel efficiency, and reduces wear and tear on equipment.
- **Flexible Connectivity Options** - Choose from wired (20 m cable) or RF wireless transmission, depending on site needs and infrastructure.
- **Built to Last** - Constructed with industrial-grade steel and protective sealing to endure long-term exposure to the elements.
- The FORCE 06 is easy to install, with training available from Trakblaze's highly skilled engineers via Zoom or on-site. It's essentially a do-it-yourself product

### ROBUST TOUCH SCREEN WEIGHING CONTROLLER



- Wireless Connection
- High definition LCD Touch Screen
- Bluetooth Connection
- Built-in Printer
- Rechargeable Battery & Direct Power Operation
- Battery Charging Time: Approx. Up to 9 hrs from empty battery
- Total Working Hours: Approx. 10 hrs (20 hrs with Screensaver)

### TECHNICAL DATA

Model	FORCE 06-50t	FORCE 06-100t
Scale Quality	2	4
Weighing Surface Dimensions (mm)	700(L) x 800(W)	
Overall Size (mm)	1396(L) x 940(W) x 67(H)	
Individual Scale/Pad Capacity	25t	
Static Accuracy (single pad):	± 0.05%	
Static Accuracy for Truck Weighing:	± 0.5% (GVM)	
Dynamic Accuracy for Truck Weighing:	± 1 - 2% (GVM)	
Max Capacity	50t	100t
Accuracy	1/2000	
Safe Load Protection	120%	
Connection	20m cable / 20m RF Wireless	

Note: Subject to change without notice. Images are for illustration purposes only. Accuracies may vary based on site conditions and vehicle operation.



## Mining/Haul Truck Volumetric Scanner

Maximising Profits & Payloads

### Real-Time Volumetric Scanning System for Mine Haul Trucks

TVS is a non-contact volumetric measurement scanning system designed to measure loads of bulk loose solids & minerals in mining trucks.

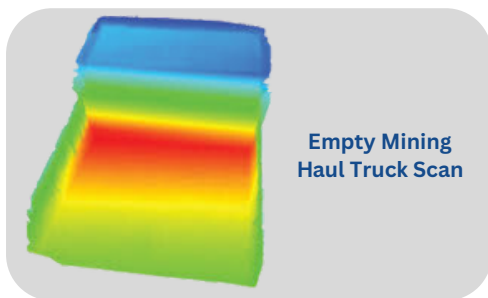
The TVS software has been developed specifically to allow direct acquisition of data from the intergrated laser scan head allowing for real-time monitoring of payloads.



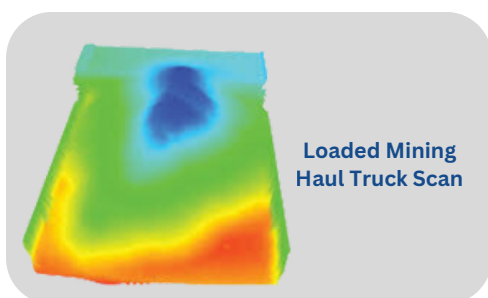
Trucks are scanned as they pass slowly beneath an elevated Scan Head, which houses two high-precision distance lasers, commonly known as laser scanners. As a vehicle moves through the scanning area, the laser scanners capture thousands of distance measurements per second, creating a detailed data profile in real-time.

As a truck passes beneath the laser scanners, the system captures distance data and generates a detailed 3D model or "surface profile" within the software.

To establish a baseline, the vehicle is first scanned while empty, and this profile is stored in the system database as the zero reference. When the truck is scanned with a load, the software compares the new profile against the recorded empty profile. By precisely aligning the two profiles, the system calculates the load volume based on the differences detected.

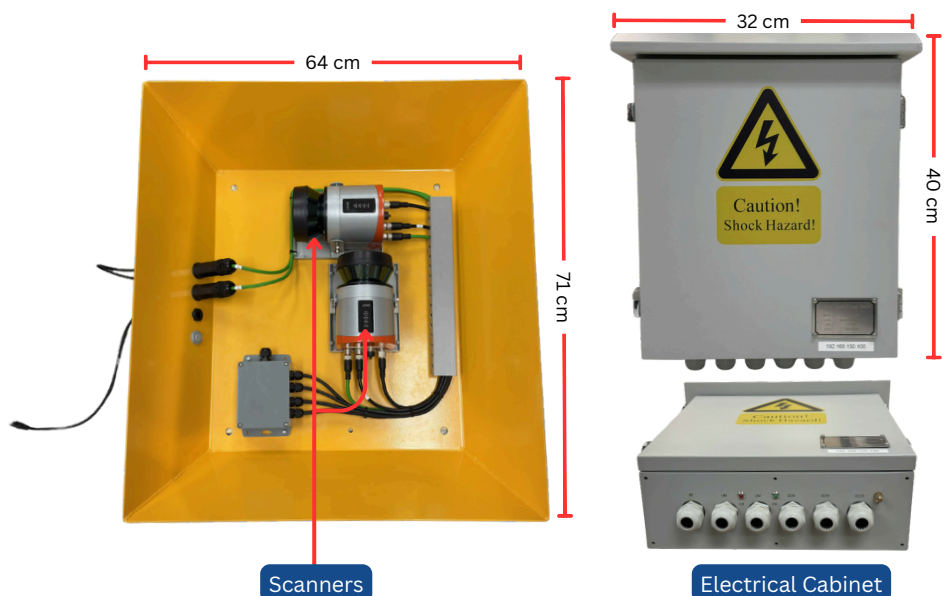


Empty Mining Haul Truck Scan



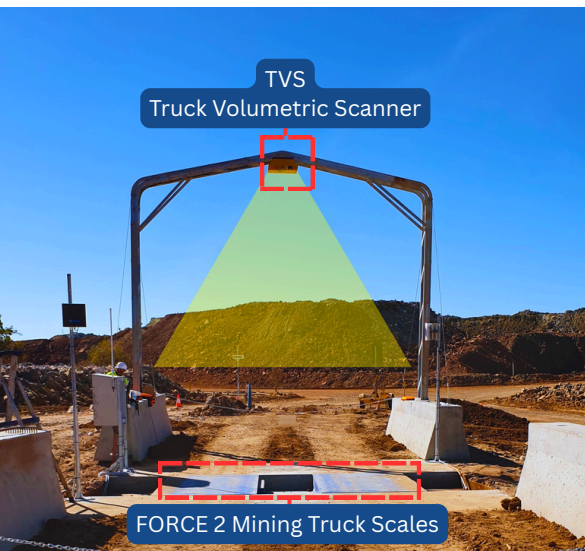
Loaded Mining Haul Truck Scan

### Volumetric Scanning Kit



Scanners

Electrical Cabinet



## Data Interface Options:

Data Interfaces	SQL Server, MODBUS (TCP)
Data Fields	Volume (m3), Speed (m/s), Length (cm), Width (cm)
3D Output	X3D Compliant, 3D model for every scan
Auto Rating	Software automatically determines the validity of scan data and rate a scan as 'Good' or 'Bad'.
Laser Status	Laser contamination status is monitored via the touch screen interface (Good, Contamination Warning, Contamination Error).

Note: Subject to change without notice. Images are for illustration purposes only. Accuracies may vary based on site conditions and vehicle operation.

The TVS is easy to install, with training available from Trakblaze's highly skilled engineers via Zoom or on-site. It's essentially a do-it-yourself product

## Software

The TVS processing software provides near real-time outputs to the industrial data network through a responsive design using multi-threaded technology, with calculations of production critical parameters in less than 10 seconds!

**The software processes:** Date & time, Vehicle ID (optional), Volume, Length (m/ft), Speed (m/s), Scan validity, Empty/loaded.

**TVS**

File

System Time **2016/08/02 9:03:28 AM**

Local Data Folder C:\ScanData

Laser Status Monitor - WIDTH  Laser Status 192.168.9.211

Laser Status Monitor - TRACK  Laser Status 127.0.0.1

Most Recent Scan Data

Length 43.47 ft  
Length (FOI) 4.37 in  
Speed 1.04 m/s  
Volume 116.3 yds  
Data Valid (Post Processing Result)

0.00 m/s Laser to Ground Detecting.... Ground at 1493

Date	Time	Truck ID	Volume	Length (ft)	Speed (m/s)	Scan Valid	Empty / Loaded	Local Link
2016/07/20	11:41 AM		5.84	44.75	0.95	True	<input type="checkbox"/>	
2016/07/19	11:10 AM		129.72	45.05	1.15	True	<input type="checkbox"/>	
2016/07/19	11:16 AM		120.38	42.32	1.28	True	<input type="checkbox"/>	
2016/07/19	11:20 AM		118.10	42.49	1.46	True	<input type="checkbox"/>	
2016/07/19	2:01 PM		117.08	43.47	1.05	True	<input type="checkbox"/>	
2016/07/19	2:04 PM		116.47	43.641	1.15	True	<input type="checkbox"/>	

9:01:47 AM: 20160719140101 Processing Complete, result: Success  
9:02:15 AM: 20160719140450 Processing Complete, result: Success  
9:02:50 AM: 20160719141152 Processing Complete, result: Success  
9:03:16 AM: 20160719141549 Processing Complete, result: Success

Download Data

CTcpComm - No Device at - 127.0.0.1

## Real-Time Volumetric Scanner Revolutionising Rail Productivity

### Real-Time Volumetric Scanning Software for Wagon Load Optimisation

The Trakblaze RVS is a rail industry specific volumetric scanning system that provides accurate and reliable volumetric data for each wagon.

The Trakblaze RVS enables rail loadouts to become more efficient and payloads are maximised each and every time through real-time scanning.



### System Description

The Trakblaze RVS software has been developed specifically to allow direct acquisition of data from High-Speed 2D lasers over an IP network and custom developed algorithms built into the software, use captured data to generate volume information and measurement parameters for each train or wagon allowing for improved productivity through full-time monitoring of mission critical data.

The goal of the software which runs on a Microsoft™ Windows platform is for fast calculation deliverables of real time feedback and key metrics to optimise loading of each and every wagon. In turn, this assists operators in the fine tuning of loading operations.

The RVS and MVS is easy to install, with training available from Trakblaze's highly skilled engineers via Zoom or on-site. It's essentially a do-it-yourself product

# MVS

## Mobile Volumetric Scanner

### Advancing Volumetric Efficiency Through Innovation



### System Features

The scan processing software provides near real-time outputs to the industrial data network.

- Calculation of production critical parameters in approx.10 seconds or less.
- Easy installation and configuration.
- TCP interface to 2 x Lidar lasers to gather raw data.
- MODBUSTCP interface to provide an industry standard data delivery mechanism.
- Data items delivered to the industrial network are:
  - Loaded Volume (m<sup>3</sup>)
  - Tare Volume (m<sup>3</sup>)
  - Net Volume (m<sup>3</sup>)
  - Data Valid flag (valid / not valid)
  - Laser status flag for remote maintenance monitoring (Error, Contamination, OK)

## WHY CUSTOMERS CHOOSE TRAKBLAZE

### PROFIT-FOCUSED PERFORMANCE

Your investment deserves more than a quick fix. Choosing the wrong weighing system can lead to costly downtime, unreliable results, and lost profits. That's why our customers trust Trakblaze we deliver proven, long-term weighing and balancing solutions designed to boost productivity and protect your bottom line.

### INDUSTRY-LEADING SPECIALISATION

When it comes to static, dynamic, and high-speed in-motion weighing, Trakblaze leads the world. We're the only company offering a complete range of precision weighing and balancing systems across rail, road, mining, and aviation industries engineered to perform in the toughest environments.

### BUILT FOR QUALITY & DURABILITY

Every Trakblaze system is built to last. Manufactured under strict quality control using advanced load cell technology and intelligent, user-friendly software, our products deliver accuracy, reliability, and ease of use with minimal maintenance required.

### TRUSTED EXPERIENCE


With over 95 years of innovation, Trakblaze has earned the trust of industries worldwide. Our reputation for reliability, precision, and customer care continues to make us the preferred partner for weighing and balancing solutions that perform.

SALES | SERVICE | HIRE


**TRAK BLAZE**

MINING, RAIL, ROAD & AIRCRAFT WEIGHING SYSTEMS

*Over 95 Years of Innovation*

 +61 (0) 3 9318 9277

 [info@trakblaze.com](mailto:info@trakblaze.com)

 [www.trakblaze.com](http://www.trakblaze.com)

 5 Mareno Road, Tullamarine, Victoria, Melbourne, Australia 3043

Follow us on     